

Notes: Notes of the 41st Meeting of the Maules Creek Coal Community Consultative Committee
Held at Boggabri Golf Club at 2:00 pm.

Wednesday 24 May 2023

Members Present: Elizabeth O'Hara (EOH) – Community Representative, Emma Bulkeley (EB) – WHC, Libby Laird (LL) – Maules Creek Community Representative, Michelle Henry (MH) – Narrabri Shire Council, Robyn Grover (RG) – Community Representative, Talan Breaden (TB) – WHC, Steve Eather (SE) – Community Representative, Darren Swain (DS) - WHC

Apologies: Cr Brett Dickinson (BD) – Narrabri Shire Council, Jackie Scott (JS) – WHC, Lyndell Crowley (LC) – Community Representative,

Independent Chair: David Ross (DR)

Independent Secretary: Debbie Corlet (DC)

Agenda Items	Who to Present
1. Welcome and Apologies	DR
2. Declaration of pecuniary or other interests	DR
3. Confirmation of the Minutes of the previous meeting – Wednesday 22 February 2023	DR
4. Business arising from the previous minutes	DR
5. Company Overview	WHC
6. Next Meeting – Wednesday 30 August 2023	ALL

Agenda Item	Discussion	Action/By Whom
1.	Welcome and Apologies – DR welcomed everyone to the 2 nd meeting of the year.	
2.	Declaration of Pecuniary or Other Interests – DR is paid a fee as chair as is DC for typing the minutes. EOH has a small bundle of WHC shares. RG has a family member working at Maules Creek.	
3.	Confirmation of the Minutes of the Previous Meeting – Members were comfortable with the Minutes from the previous meeting.	
4.	<p>Business Arising from the Previous Minutes</p> <p>DR noted that there had been no interest in new membership on the committee. However, with EB’s assistance, the committee has been advertised in the green flyer and on the website. DR has also discussed the committee with some community groups.</p> <p>A discussion then took place about the Resources Regulator’s (RR) reforms. While RR staff were unable to attend the May CCC meeting, EB observed that the reforms are available on the DPE website:</p> <p>https://www.resourcesregulator.nsw.gov.au/rehabilitation/resources</p>	
5.	<p>Company Overview</p> <p>Report & Overview of Activities –FY23 Maules Creek Coal Market Guidance is 9.3 – 9.5 Mt.</p> <p>Health and Safety – TB noted that there had been two injuries in FY2023 year to date with TRIFR improving to 1.95. He then described when the injuries are recorded.</p> <p>LL – Asked about a truck with failing brakes that was reported in January. TB – This was uncontrolled movement of a Dozer due to the slings failing. No personnel were injured as a result of the incident as it was un-manned.</p> <p>Air Quality – There were no air quality exceedances across the quarter. With respect to depositional dust, the annual reporting period remained below the relevant project approval criteria of 4g/m²/month for the respective monitoring points. The High-Volume Air Sampler (HVAS), located on ‘Olivedene’, had no exceedances recorded. The Rolling Annual Average was recorded at 8.9 µg/m³ (Annual Average Guideline of 30 µg/m³). Annual Rolling average for TEOM 1 (PM 10) 6.1 µg/m³ at 31 March 2023 (criteria 30µg/m³).</p>	

	<p>Community – Donations for January to March 2023 are \$177,000 spent in the local community. More information on Sponsorships and Donations can be found at http://whitehavencoal.com.au/sustainability/community/donations-sponsorships/.</p>	
6.	<p>General Business</p> <p>DR then split the committee into groups to for further discussions about what members or the wider community see as the big issues associated with the mine’s operations at present. Out of these discussions, there was agreement for a site visit to take place during the CCC’s August meeting as well as a tour of the biodiversity offsets. Some members also requested if the CCC could get hard copies of presentations.</p> <p>There was also discussion about tyre disposal management onsite. DR noted that there had been good discussion about the tyres at the Tarrawonga CCC meeting. Two suggestions had been raised – Molycop in Newcastle and Andromeda Industries.</p> <p>LL: how many houses have WHC currently purchased or are owned in Boggabri and in the area generally? DR: this is directly relevant to the discussion that will be held in the Joint CCC.</p> <p>EB – To pass on the link to the Andromeda Industries to relevant WHC staff to find out more information. WHC have already spoken with Molycop and they do not have capacity to handle tyres the size of those used in the mines. They basically focus on road tyres.</p> <p>DR – Relating to Santos, there has been much discussion at other CCCs on the matter. People are interested in the pipeline route and where it is proposed to go through the various mines’ offsets. Is it possible to get a bigger map of the area that displays the offsets from the three separate mines. TB – Will talk to the offsets team.</p> <p>DR – Request for a slide in future describing what key activities are coming up over the following 3-months after each CCC meeting. Information like modifications, amendments etc. LL – Requested a slide on tyre management – including what investigations were being undertaken into recycling - for each presentation.</p> <p>EOH – Clearing. Did you finish the clearing? Was anything relocated? EB – The clearing has been completed. Lots of lizards moved out. Bats monitored. Nine bats have trackers. Don’t think any animals euthanised. If an invasive species, they are put down but nothing euthanised that I’m aware of.</p> <p>EOH – Asked for MCCM to release footage of plume from 20th August 2020 at Maules Creek mine that is currently topic of court case.</p>	<p>ACTION 3 – TB to talk to offsets team and provide map with names and locations.</p> <p>ACTION 4 – WHC to provide a slide in every presentation about what is coming up and a slide on tyre management.</p> <p>ACTION 5 – DS to find out more about the court case from August 2020.</p>

	DS – I'd be doubtful that can be released if it is part of current court case. But I'll check it out.	
7.	Next meeting date Wednesday 30 August at 2:00 pm. Site visit. DR – Thanked everyone.	

Meeting Closed: 3:32 pm

Appendix 1: Actions

Page No	Action No	Description	Date Raised
3	1	EB to clarify drop in piezometer Reg 12.	24 May 23
3	2	TB to provide more info about the AHS and any implications for staff.	24 May 23
4	3	TB to talk to offsets team and provide map with names and locations.	24 May 23
4	4	WHC to provide a slide in every presentation about what is coming up and a slide on tyre management.	24 May 23
5	5	DS to find out more about the court case from August 2020.	24 May 23

Briefing Note

To: Maules Creek Coal Mine CCC Members

From: Maules Creek Coal Mine (MCC)

Date: 24 May 2023

Reference: Responses to questions MCC CCC May 2023 Meeting

Subject: Responses to MCC CCC Actions and Questions

Question	Response
Action 1. EB to clarify drop in piezometer Reg 12.	MCC have spoken with the contractor who undertakes the monitoring and they believe it to be a transcription error, as discussed on the day bores don't react that quickly if it was to have dropped it would not have recovered 10 meters in a month. A review of the last couple of years of data has shown the bore to be incredibly stable with only centimetres of variation, this was 10 meters which indicates that it was transcribed as 34 instead of 24.
Action 2. TB to provide more info about the AHS and any implications for staff.	This will be presented at the next CCC meeting in August
Action 3. TB to talk to offsets team and provide map with names and locations.	See attached maps from the Biodiversity Management Plan
Action 4. WHC to provide a slide in every presentation about what is coming up and a slide on tyre management.	Will be presented in the next CCC meeting in August
Action 5. DS to find out more about the court case from August 2020.	As discussed at the last CCC Whitehaven Coal do not comment on legal matters currently before the court

Maules Creek Coal Mine

CCC MEETING
Q1 2023

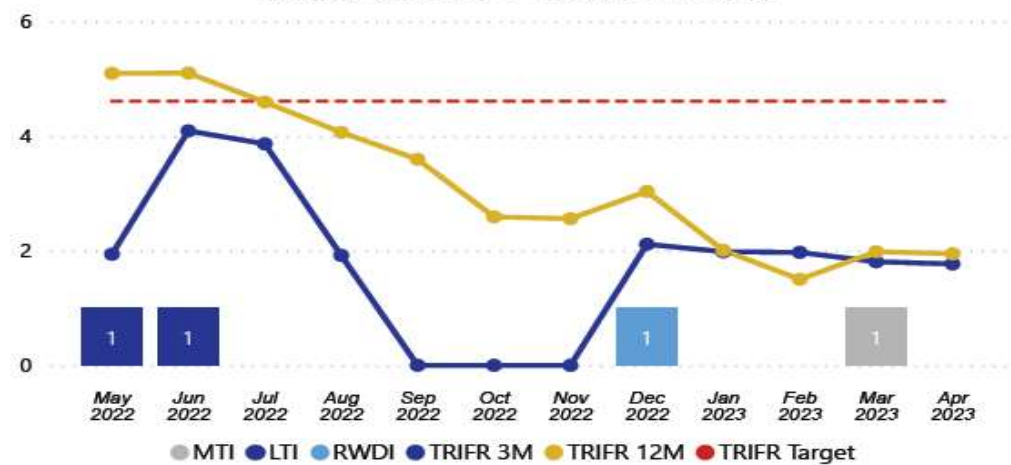
Maules Creek Coal Mine
May 2023



Company Report and Overview of Activities

- MCC have delivered excellent safety performance in Q3 leading to a 12MR TRIFR of 1.95
- FY23 Maules Creek Coal Market Guidance is 9.3 – 9.8 Mt

Recordable Injuries & Occupational Illness



Potential Level 4+ Hazards & Incidents



Health and safety

Recordable Injuries

- There has been 2 recordable injuries in FY2023 year to date with TRIFR improving to 1.95

Field Leadership Activities

- Improved Field Leadership activities (Safety Interactions and PTO's ~ 600 per month)
- 100% compliance with Critical Control Monitoring

PL4 Hazard Focus

- Maules Creek Coal continues with our focus on reducing PL4+ hazards in the workplace through education and intervention.

Continuous Improvement

- Maules Creek Coal continues with the review and update of our safety management system while focusing on immediate care for injuries sustained on site.
- Implementation of key safety initiatives (Operator Alertness System, Vehicle Hierarchy)
- Improved incident investigations to align with the recommendations of the Brady Review (industry best practice)

CCC MEETING

Environmental Monitoring

All data is summarised for quarter 4
in detail In the Monitoring Report
supplied

Maules Creek Coal
May 2023



WHITEHAVEN COAL

Environmental Monitoring

Q1 2023 - Air Quality Monitoring

Maules Creek Coal
May 2023



WHITEHAVEN COAL

Depositional Dust

The annual reporting period (12 monthly rolling annual average) remained below the relevant Project Approval (PA 10_0138) criteria of 4g/m²/month for the respective monitoring points.

MONTH	MC1	MC2	MC3	MC4
January	1.3	2.7	6.5c	0.5
February	5.9c	2.8	2.0	1.6
March	4.2c	1.6	1.7	2.2
12 MONTH ROLLING AVERAGE	1.0	1.1	2.5	1.1

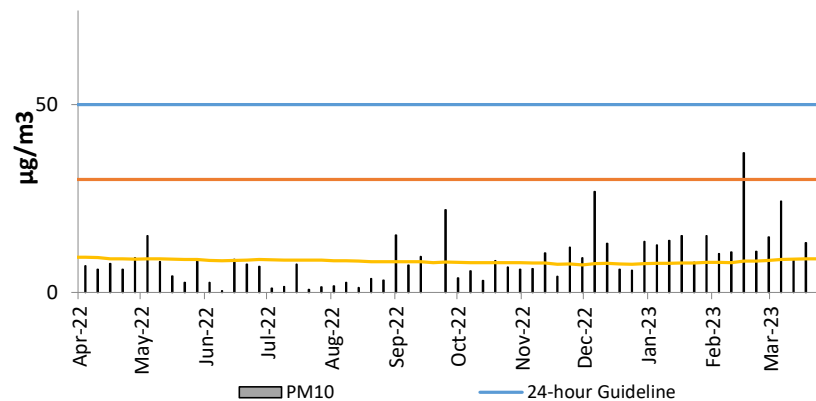
^c samples contaminated by bird dropping, decomposed insects or vegetable matter.
* Sample broken in transit.

HVAS

High Volume Air Sampler

- The HVAS monitor is located on 'Olivedene'
- Data is publically available
- No exceedances recorded during the 24 hour average of 50 $\mu\text{g}/\text{m}^3$
- The Rolling Annual Average was recorded at **8.9 $\mu\text{g}/\text{m}^3$** , which is below the Annual Average Guideline of 30 $\mu\text{g}/\text{m}^3$.

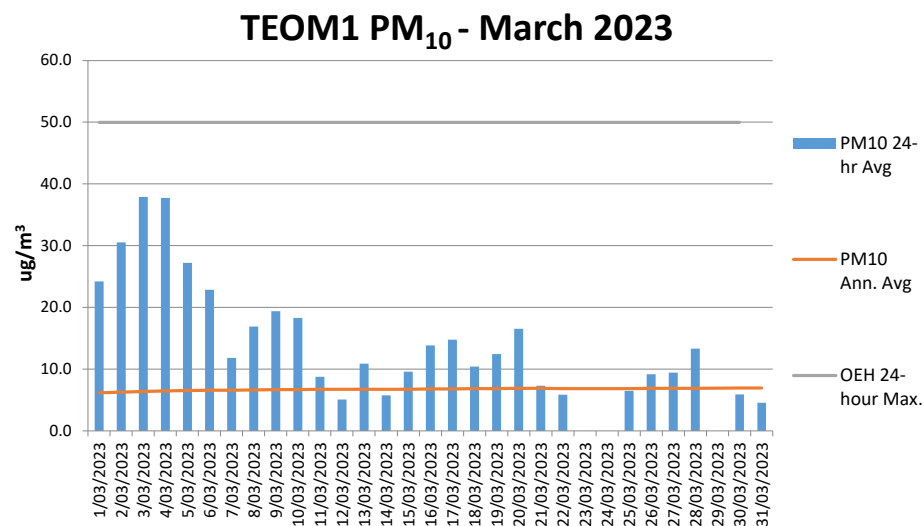
HVAS (PM10) - Olivedene



TEOM (PM10)

Tapered element oscillating microbalance

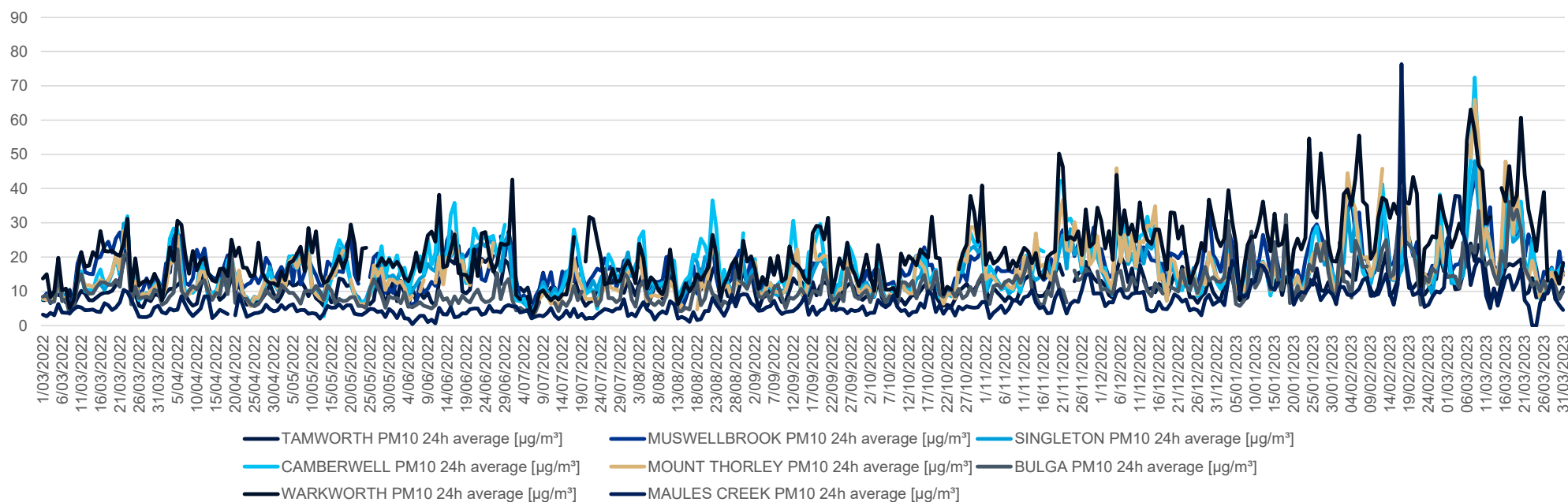
- Publicly available results of TEOM1 available on the EPA website.
- Annual rolling average for TEOM 1 is $6.9 \mu\text{g}/\text{m}^3$ at 31 March 2023 (criteria $30 \mu\text{g}/\text{m}^3$).



Air Quality Monitoring Rolling 12 Months

Annual Reporting Data 1 March 2022 – 31 March 2023

Regional Air Quality PM10 Comparison



12 monthly	TAMWORTH PM10	MUSWELLBROOK PM10	SINGLETON PM10	CAMBERWELL PM10	MOUNT THORLEY PM10	BULGA PM10	WARKWORTH PM10	MAULES CREEK PM10
Annual Average	11.4	17.8	15.5	17.5	16.0	11.5	22.4	6.9
Max 24hr Ave	24.0	46.0	48.0	72.5	66.0	39.8	63.1	76.4

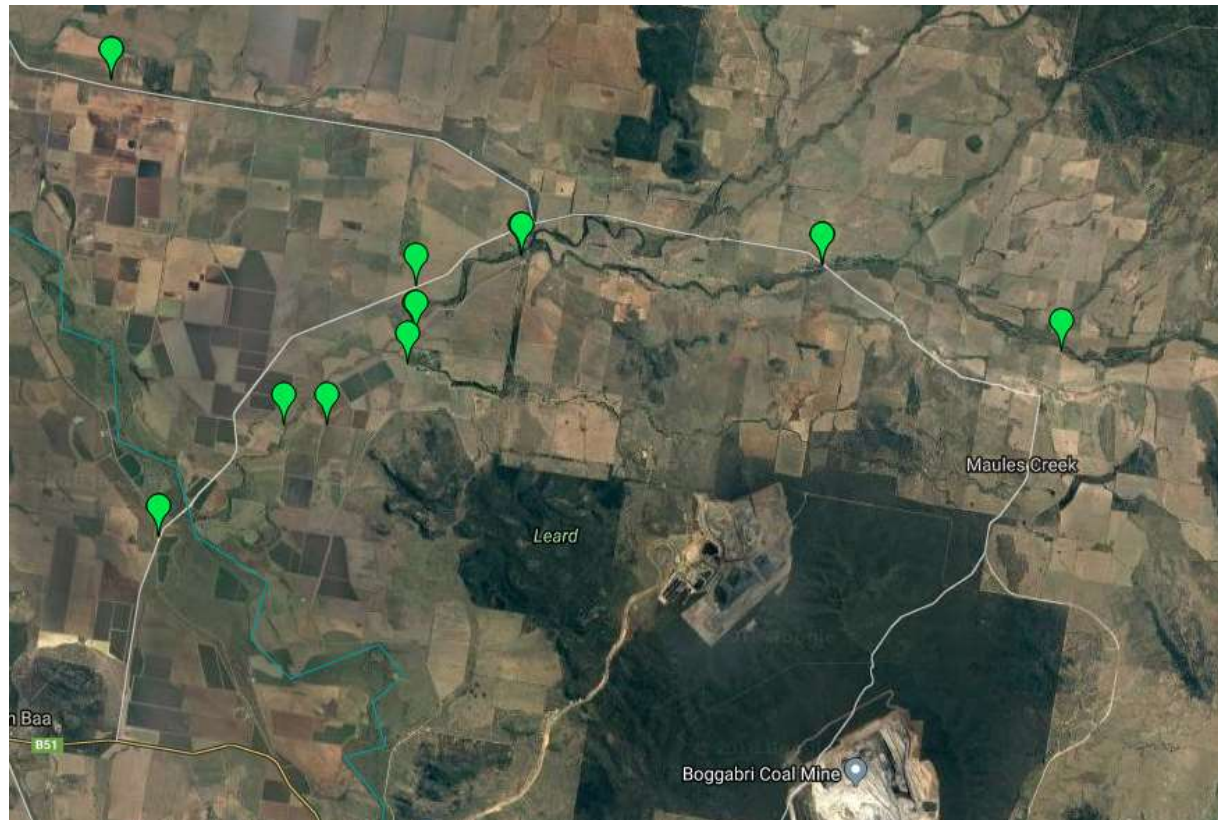
Environmental Monitoring

Q4 2022 - Groundwater

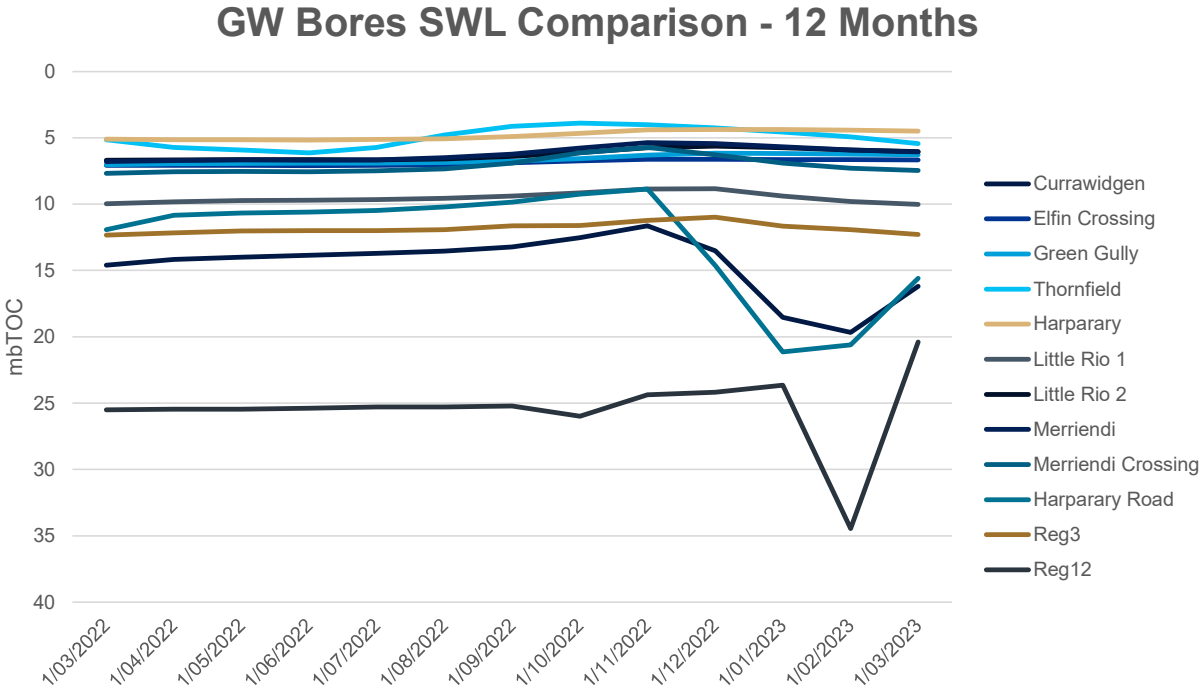
Maules Creek Coal Mine
May 2023



Monitoring Locations



Groundwater Levels

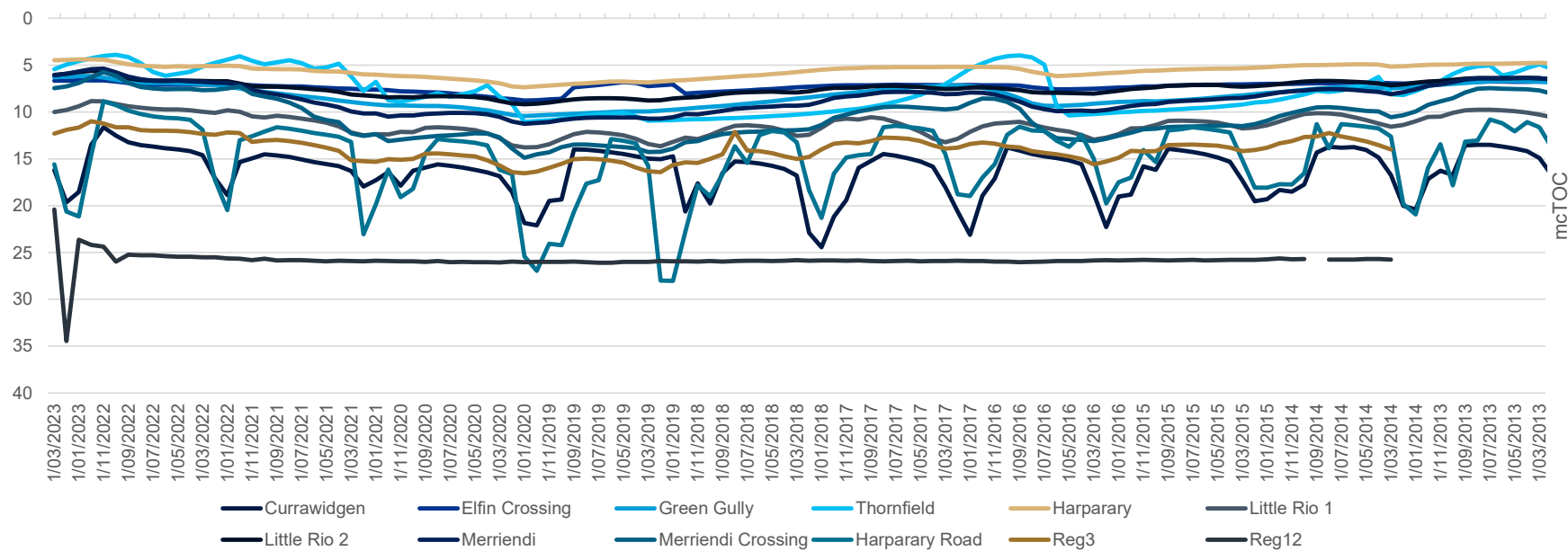


* Note Reg12 and Reg3 both within Boggabri Volcanics

Source: NSW DPI- Water & MCCM monitoring data

Groundwater Levels

GW Bores SWL Comparison - 10 Years

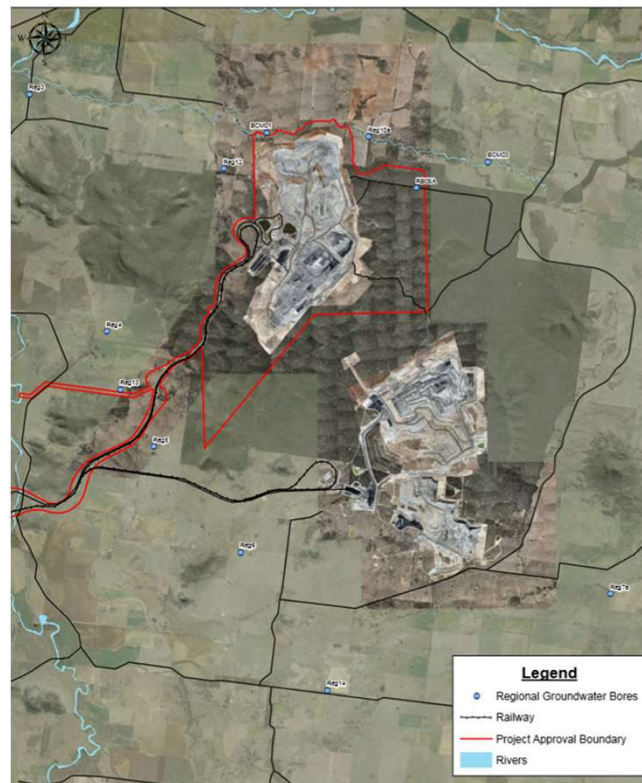


Source: NSW DPI- Water & MCCM monitoring data

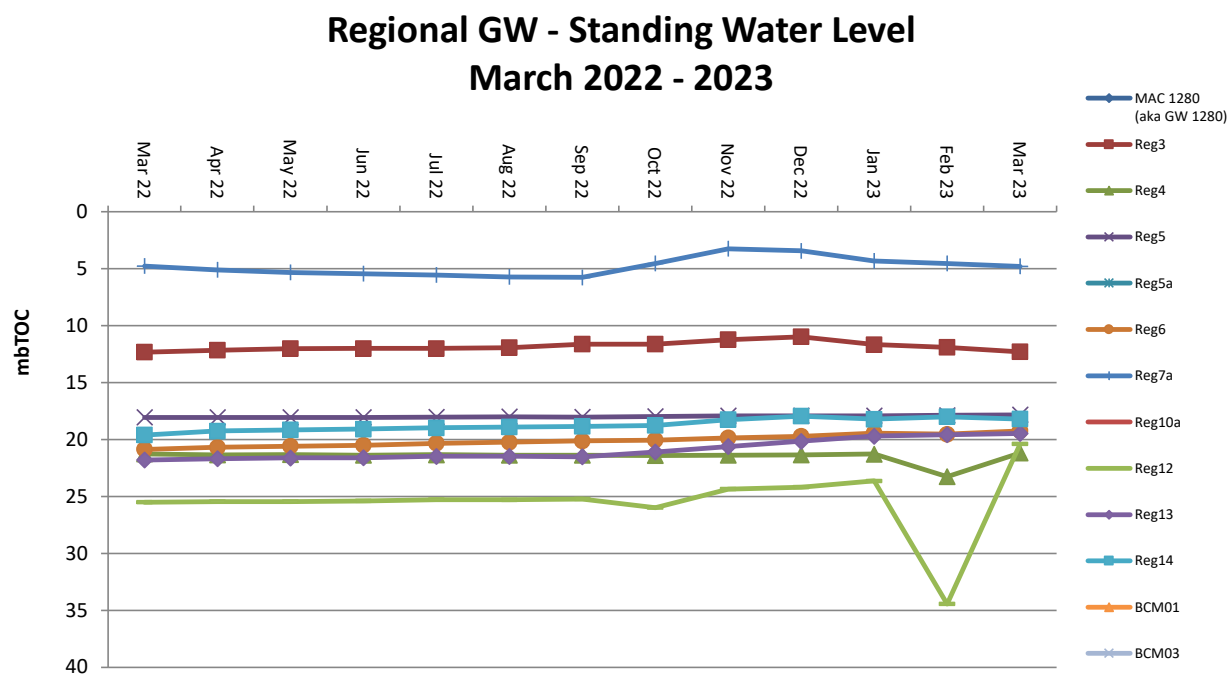
* Note Reg12 and Reg3 both within Boggabri Volcanics

Standing Water Levels

Regional Groundwater Bores



Standing Water Levels



* Missing data due to restricted access as a result of wet weather

Environmental Monitoring

Q1 2023 - Biodiversity

Maules Creek Coal Mine
May 2023



Biodiversity Management

Feral Animal Management

Most recent routine Whitehaven Biodiversity Feral Animal Control program (January to March 2023) results were:

- 637 out of total 935 pigs trapped or baited were from the Maules Offset properties; and,
- 143 out of total 227 Canid Pest Ejectors (1080) consumed were from the Maules Offsets properties.

Weed Control

Spraying of summer dominant exotic grasses such as African Lovegrass, Rhodes Grass, Buffel Grass and Coolatai Grass; and Spraying of Broadleaf weeds such as Noogoora / Bathurst Burr, Thistles, St Johns Wort has been completed. Targeted weed control for Prickly Pear, Sweet Rose Briar, Boxthorn and Fleabane is ongoing.



Biodiversity Management

Bushfire Response and Fire Break Track Maintenance

WHC assisted RFS and NPWS respond to the Kenna Bushfire ~4700ha that impacted ~700ha of non Maules Offsets as well as continue to repair track damage due to impacts of last years heavy rainfall.

Annual Fauna Monitoring

Annual Fauna Monitoring Microbat Surveys using harp traps completed.

Upcoming Biodiversity Projects and Works

Annual Nest Box and Habitat Augmentation Monitoring and Installation underway

Legacy Asbestos Dumps Haz Mat Remediation to commence.

Monthly Pest Animal Management Program April to June 2023 to continue.

Continued seasonal Weed Control Programs.

Seasonal Tree Planting and Onavale Seeding Revegetation Program underway

Quarterly Threatened Flora Inspections and Programs ongoing.

Continued Fire Break Track Maintenance Program ongoing.

Undertaken Ecological Burn Program to commence.

Heritage Management & Annual Heritage Site Inspections to commence.



Autonomous Haulage System

AHS Update

Maules Creek Coal Mine
May 2023





AHS Operations



The Autonomous Haulage System (AHS) at Maules Creek are operating between 2 EX8000 excavator fleets, with a total of 20-24 autonomous trucks operating at any one time. To accommodate this, we operate MITs (Manned Instrumented Trucks) inside the AOZ (Autonomous Operating Zone), where an operator will move through the AOZ carrying coal or other material to an out-of-AOZ dumping area while interacting with Autonomous Haul Trucks.

The Autonomous trucks are currently completing a 10km round trip haul, averaging 42 minutes per haul cycle. This is creating a large benefit for the entire operation, assisting in times of labour shortages at Maules Creek Coal.

The AHS Project Team are working with the Hitachi AHS teams to continuously improve the System with scoping of new features, improvement initiatives and regular governance reviews to ensure we're working safely at Maules Creek.,

FACT: AHS at Maules Creek has reached ~90,000 hours of operation.

FACT: Over 150 people are trained and competent in AHS operations at Maules Creek (In-pit, Mine Control and Engineering teams)

DID YOU KNOW: In AHS, there are Excavator, Dozer, Grader, Water Cart and Service Cart operators, along with AHS Controllers, AHS Builders (Map Builders) and multiple Engineering roles.



Old issue – AHT (Autonomous Haul Trucks) are very conservative in their turning radius at a loading or dumping area.

New Feature – A new soon to be released feature allows the AHTs to take tighter turning radiuses allowing for optimised path generation in these work areas, decreasing the time the truck takes to complete its haul cycle.

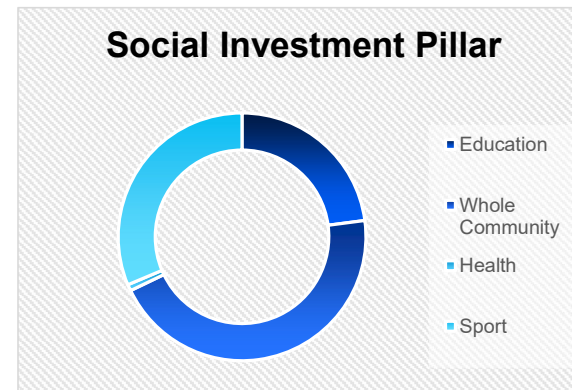
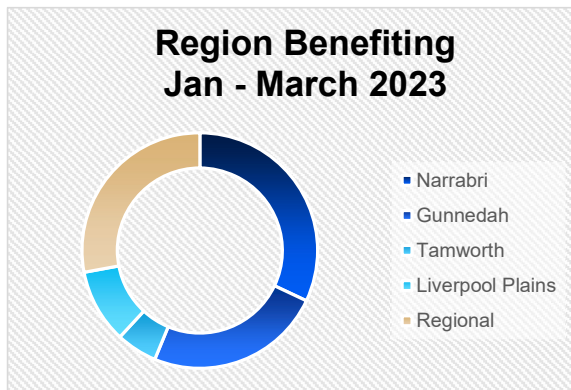
Community

Maules Creek Coal Mine
May 2023



Community

- Whitehaven continues to support the local Community with donations and sponsorships.
- More information on Sponsorships and Donations can be found at:
 - <https://whitehavencoal.com.au/sustainability/community/donations-sponsorships/>
- Donations for Jan – March 2023 over \$177,000 spent in the local community.
- Some highlights – CAN Assist, Little Wings partnership, Westpac Rescue Helicopter, Maules Creek Camp Draft, Gunnedah Scholarship Fund, Gunnedah South School refurb outdoor area, Tamworth Science and Engineering Challenge, Namoi Women's shed toilet, Narrabri Show, Boggabri Rugby league club, Quirindi Rural Heritage Village, North West Cow Horse,



Thank you

Maules Creek Coal Mine
February 2023



Maules Creek Coal Mine Community Consultative Committee Meeting #41

Environmental Monitoring Report For the Q1 period, January – March 2023

Attended Noise Monitoring

Maules Creek Coal (MCC) engaged an independent acoustic consultant to conduct LAeq (15minutes) and LA1 (1 minute) attended noise monitoring at six monitoring locations on site.

A. NOISE GENERATED BY MCCM AGAINST OPERATIONAL DAY & NIGHT NOISE CRITERIA; JANUARY – MARCH 2023.

The results show that MCCM is within EPL 20221 compliance limits, that operations did not exceed the applicable; LAeq (15minute) 35dB Criteria, LA1 (1Minute) 45dB Criteria and the EPA's Noise Policy for Industry compliance guidelines.

Table 1 – January Noise Monitoring

Location	Start Date and Time	Wind		Stability Class	Very enhancing? ¹	Limits, dB ¹		Site levels, dB ²		Exceedances, dB	
		Speed m/s	Direction ³			L _{Aeq,15minute}	L _{Amax}	L _{Aeq,15minute}	L _{Amax}	L _{Aeq,15minute}	L _{Amax}
NM1	18/01/2023 22:30	0.4	0	E	No	35	45	IA	IA		Nil
NM2	18/01/2023 23:30	0.4	92	F	No	39	45	IA	IA		Nil
NM3	18/01/2023 23:26	0.3	0	F	No	35	45	IA	IA		Nil
NM4	18/01/2023 23:00	0.4	88	F	No	35	45	IA	IA		Nil
NM5	18/01/2023 22:00	0.4	0	F	No	35	45	<25	25		Nil
NM6	18/01/2023 23:59	0.4	84	F	No	35	45	IA	IA		Nil

Notes: 1. Noise limits are adjusted by +5 dB during 'very enhancing meteorological conditions' in accordance with the NPFL.
2. Site-only L_{Aeq,15minute}. Includes modifying factor penalties if applicable.
3. Degrees magnetic north, "-" indicates calm conditions.

Table 2 – February Noise Monitoring

Location	Start Date and Time	Wind		Stability Class	Very enhancing? ¹	Limits, dB ¹		Site levels, dB ²		Exceedances, dB	
		Speed m/s	Direction ³			L _{Aeq,15minute}	L _{Amax}	L _{Aeq,15minute}	L _{Amax}	L _{Aeq,15minute}	L _{Amax}
NM1	1/02/2023 23:00	0.2	192	F	No	35	45	22	25	Nil	Nil
NM2	2/02/2023 00:00	0.2	134	F	No	39	45	29	35	Nil	Nil
NM3	2/02/2023 00:35	0.2	208	F	No	35	45	IA	IA	Nil	Nil
NM4	1/02/2023 23:30	0.3	200	F	No	35	45	23	25	Nil	Nil
NM5	1/02/2023 22:30	0.1	130	F	No	35	45	25	29	Nil	Nil
NM6	1/02/2023 23:42	0.1	109	F	No	35	45	IA	IA	Nil	Nil

Notes: 1. Noise limits are adjusted by +5 dB during 'very enhancing meteorological conditions' in accordance with the NPFL.
2. Site-only L_{Aeq,15minute}. Includes modifying factor penalties if applicable.
3. Degrees magnetic north, "-" indicates calm conditions.

Table 3 – March Noise Monitoring

Location	Start Date and Time	Wind		Stability Class	Very enhancing? ¹	Limits, dB ¹		Site levels, dB ²		Exceedances, dB	
		Speed m/s	Direction ³			L _{Aeq,15minute}	L _{Amax}	L _{Aeq,15minute}	L _{Amax}	L _{Aeq,15minute}	L _{Amax}
NM1	9/03/2023 22:30	0.5	24	F	No	35	45	22	35	Nil	Nil
NM2	9/03/2023 23:30	0.2	0	F	No	39	45	26	30	Nil	Nil
NM3	9/03/2023 23:36	0.3	0	F	No	35	45	1A	1A	Nil	Nil
NM4	9/03/2023 23:00	0.7	17	F	No	35	45	25	28	Nil	Nil
NM5	9/03/2023 22:00	1.6	16	F	No	35	45	1A	1A	Nil	Nil
NM6	9/03/2023 23:56	0.2	0	F	No	35	45	<20	<20	Nil	Nil

Notes: 1. Noise limits are adjusted by +5 dB during 'very enhancing meteorological conditions' in accordance with the NPfl.
2. Site-only L_{Aeq,15minute}, includes modifying factor penalties if applicable.
3. Degrees magnetic north, "-" indicates calm conditions.

Wind Direction during Attended Monitoring

Wind direction data is collected from the Maule's Creek Coal Mine (MCCM) Automated Weather Station (AWS). Wind data for the duration of the attended monitoring assessment, recorded at the MCCM AWS is presented in the table below.

Table 4 - Prevailing Wind Direction

Monitoring Date	Prevailing Wind Direction
July	SSE
August	SE
September	S

Blast Monitoring

There was 27 blasts at MCCM during Q1 2023. All blast monitoring results recorded within the reporting period have complied with applicable overpressure and ground vibration limits specified in the respective approvals.

Table 5 – Blast Results Summary

Parameter	Units	Frequency	Number	Average	Max	100% Limit	Exceedance (Yes / No)
Noise	dB	All	27	94.3	116.9	120	No
Vibration	mm/s		27	0.18	0.85	10	No

Air Quality

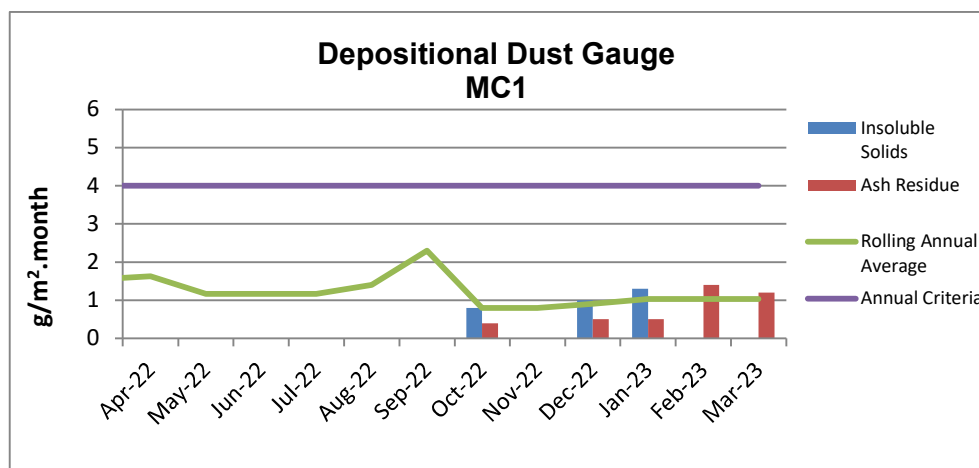
A. Total Depositional Dust

The 12 monthly rolling annual average remains below the relevant Project Approval (PA 10_0138) criteria of 4g/m²/month for the respective monitoring points.

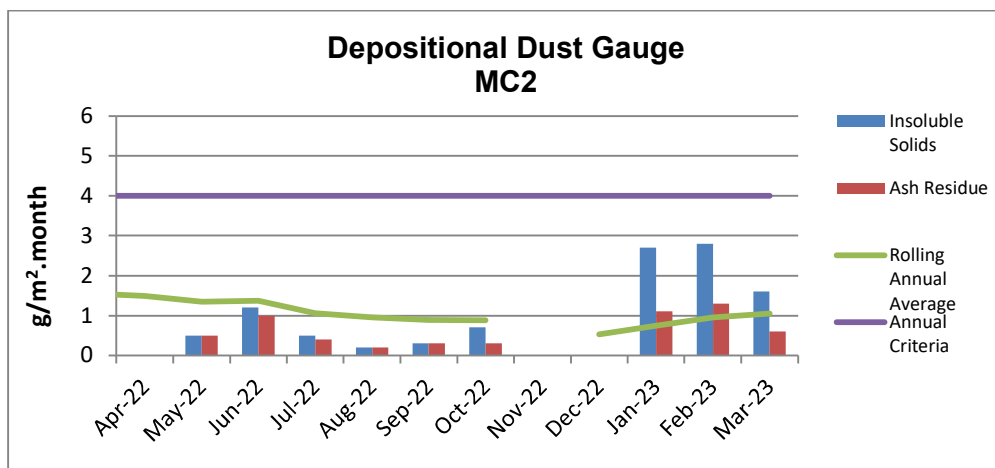
Table 6 – Deposited Dust Gauge Results [g/m²/month]

MONTH	MC1	MC2	MC3	MC4
January	1.3	2.7	6.5c	0.5
February	5.9c	2.8	2.0	1.6
March	4.2c	1.6	1.7	2.2
12 MONTH ROLLING AVERAGE	1.0	1.1	2.5	1.1

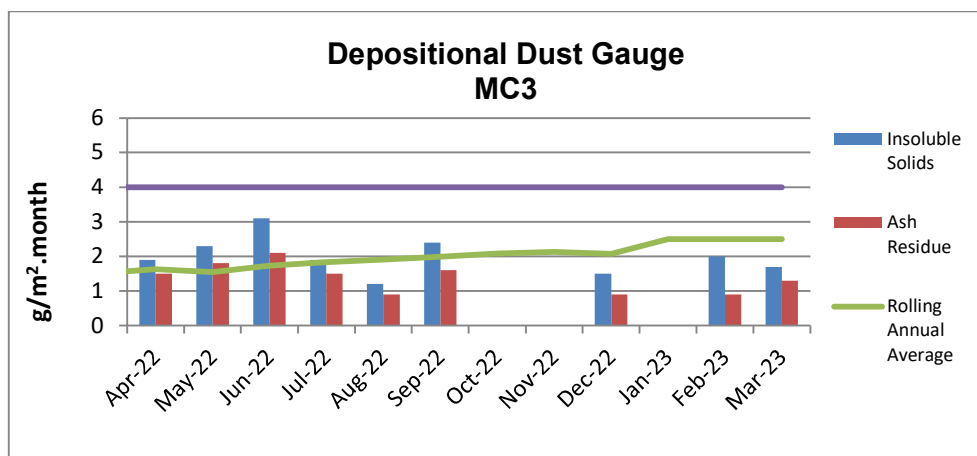
^c samples contaminated by bird dropping, decomposed insects or vegetable matter.



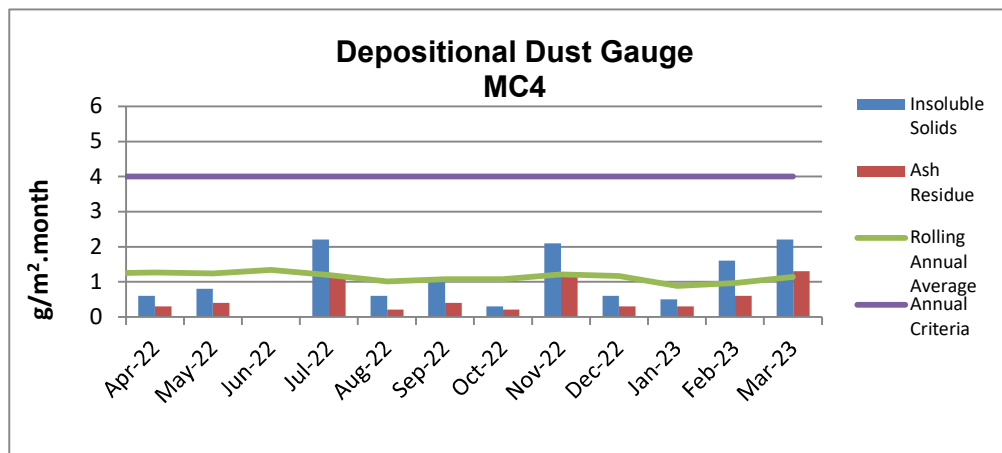
* Blank cells indicate sample periods where the sample has been contaminated and excluded from the results tables due to contaminated material (insect larvae, bird droppings, vegetation etc.).



* Blank cells indicate sample periods where the sample has been contaminated and excluded from the results tables due to contaminated material (insect larvae, bird droppings, vegetation etc.).



* Blank cells indicate sample periods where the sample has been contaminated and excluded from the results tables due to contaminated material (insect larvae, bird droppings, vegetation etc.).

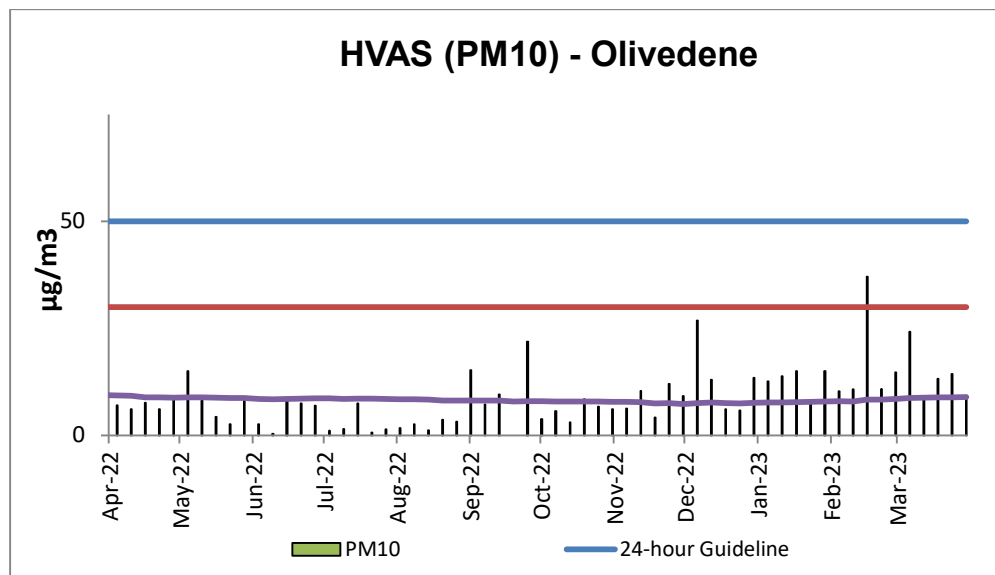


* Blank cells indicate sample periods where the sample has been contaminated and excluded from the results tables due to contaminated material (insect larvae, bird droppings, vegetation etc.).

B. High Volume Air Sampling (HVAS)

The HVAS monitor is located on the property 'Olivedene,' a mine owned property on Therribri Road. During past 12 months, there have been no exceedances of the 24-hour average of 50 $\mu\text{g}/\text{m}^3$.

HVAS PM₁₀ Rolling Annual Average as of September was **8.9 $\mu\text{g}/\text{m}^3$** , which is below the Annual Average Guideline of 30 $\mu\text{g}/\text{m}^3$.



C. TEOM - PM10 Results

The annual rolling average for PM10 at the Maules Creek Coal TEOM1 was **6.9 $\mu\text{g}/\text{m}^3$** , which is below the Project Approval annual average criteria of 30 $\mu\text{g}/\text{m}^3$ as shown in the following figure. There have been no exceedances of the 24-hour average for Q1 2023.

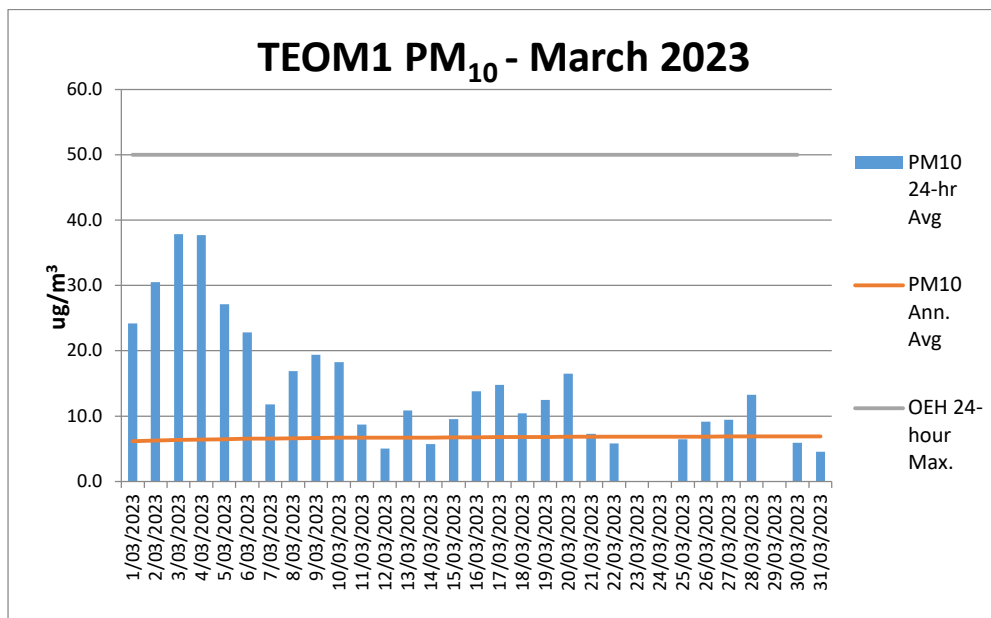


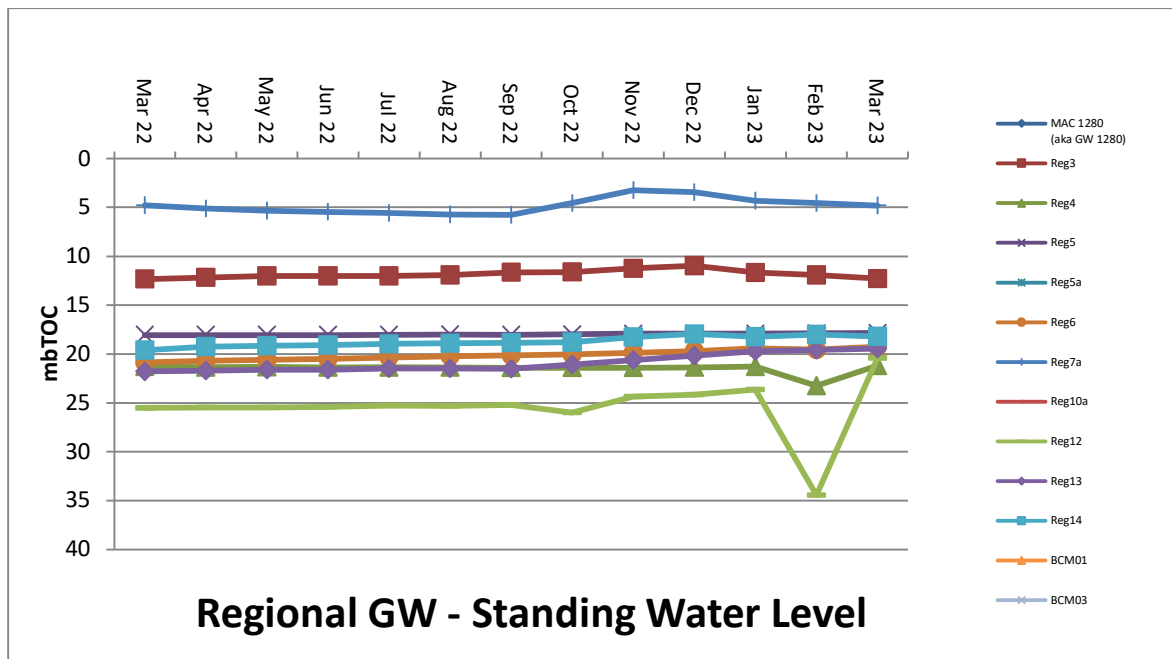
Figure 1 - TEOM Result – Particulate Matter PM₁₀ $\mu\text{g}/\text{m}^3$

* Blank columns indicate sample periods where there was either power outage, maintenance or other related causes.

Water Monitoring

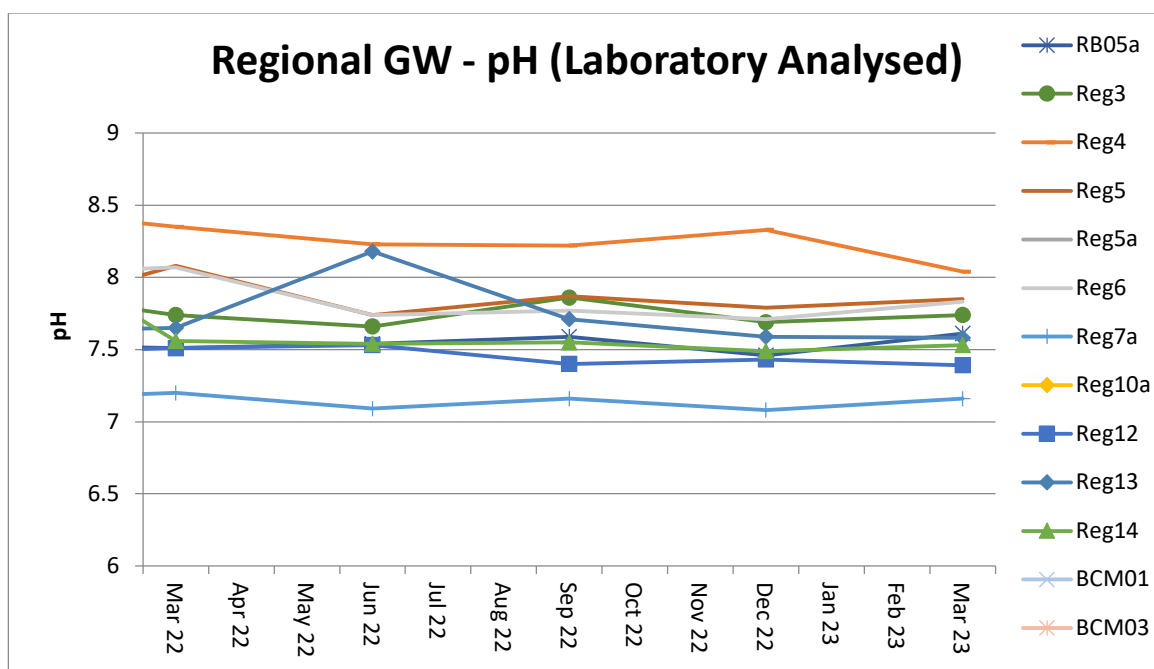
A. Groundwater

Groundwater monitoring results in open standpipe piezometers show levels to be relatively stable. The Regional bores were installed between Q4, 2013 and Q1, 2014. BCM01, BCM03, Reg10 are shallow bores which have remained dry since construction in 2013.



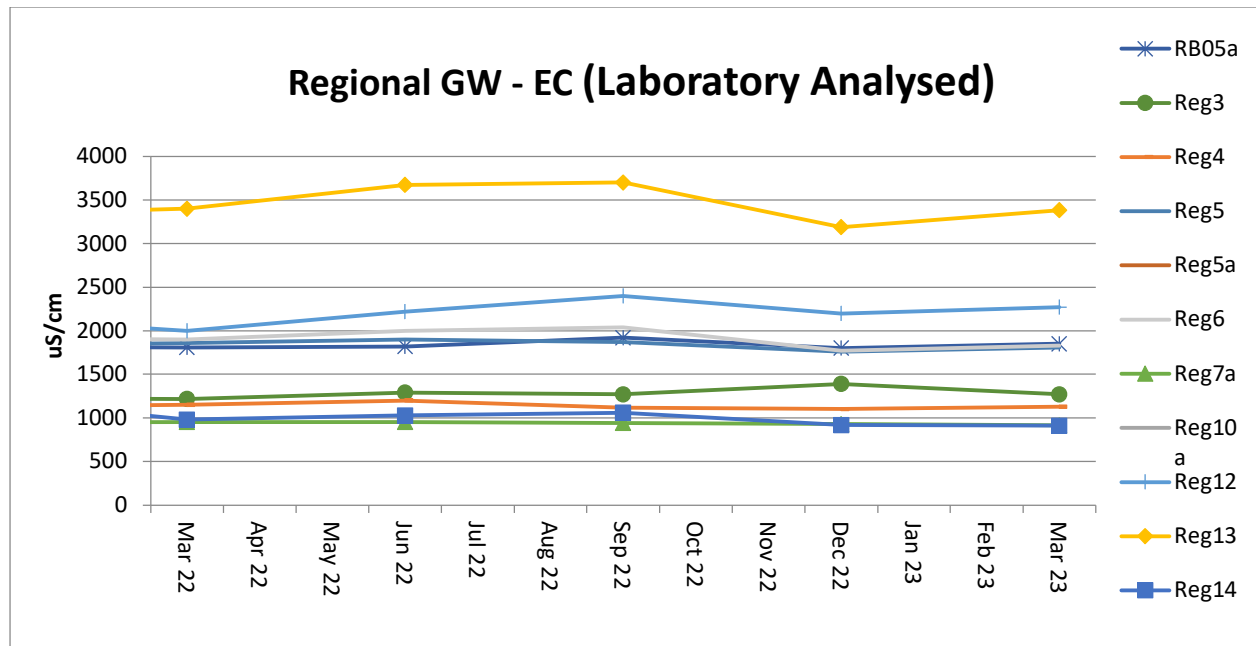
Acidity / Alkalinity (pH)

Over the past twelve months pH readings across the regional bores have remained static with very little fluctuation.



Electrical Conductivity

Laboratory Electrical Conductivity (EC) levels are all within historic groundwater EC range of 500 $\mu\text{S}/\text{cm}$ to 2,500 $\mu\text{S}/\text{cm}$, with the exception of monitoring bore Reg13 which has a historic groundwater EC range of 2,500 $\mu\text{S}/\text{cm}$ to 4,100 $\mu\text{S}/\text{cm}$. Within the last twelve months EC has remained static.

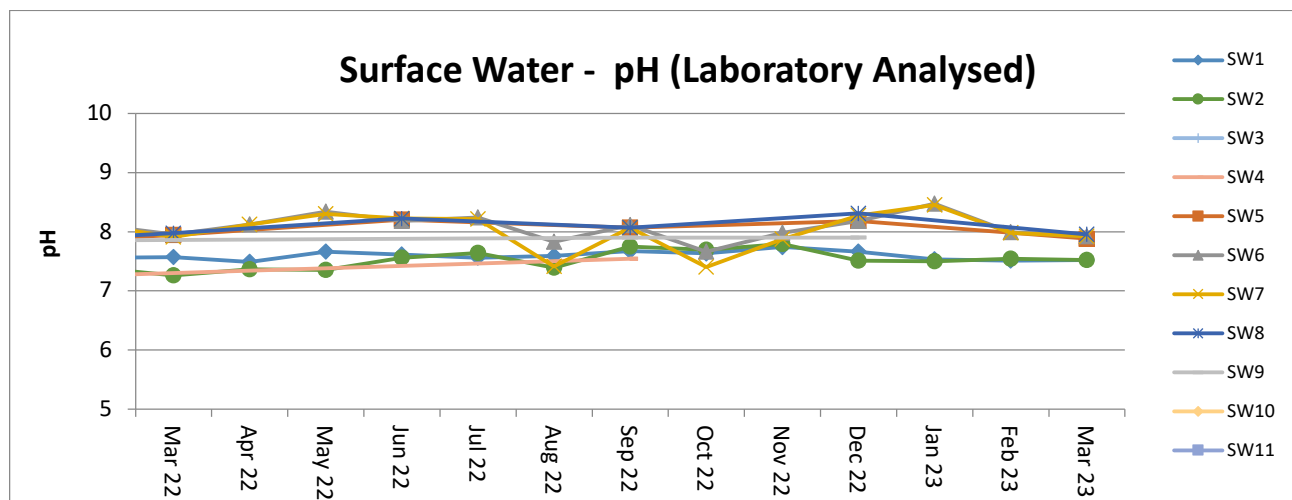


B. Surface Water – Creeks and Rivers

Routine surface water monitoring is conducted in surrounding creeks and rivers on a monthly basis. Results for parameters including pH, EC and Total Suspended Solids (TSS) are shown in the figures below.

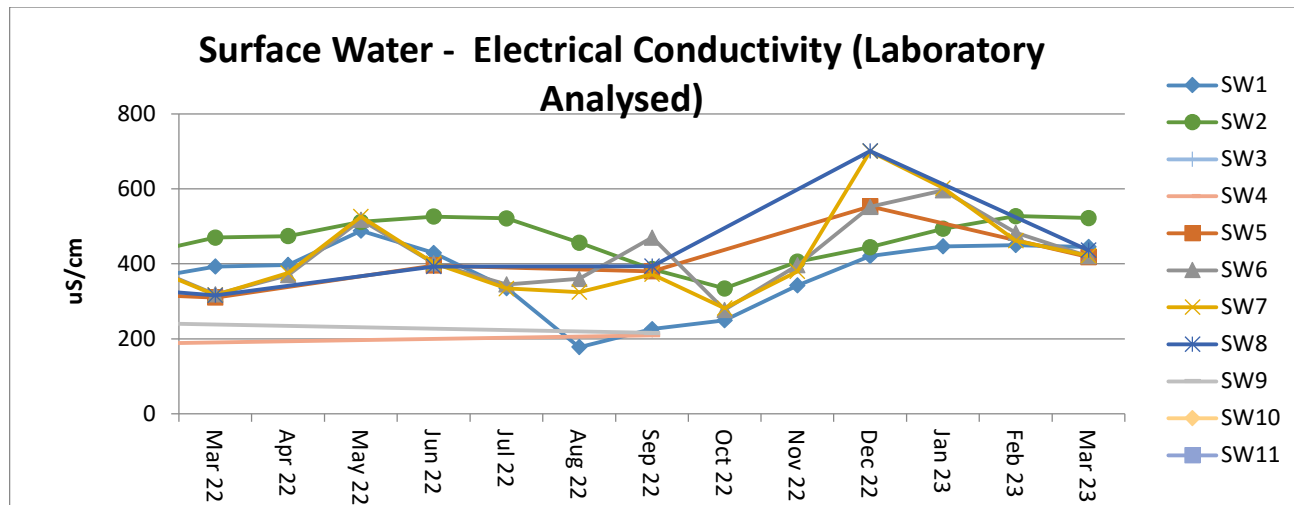
Acidity / Alkalinity (pH)

Monitoring results for pH in creeks and rivers surrounding MCCM are all trending within the ANZECC range for Irrigation, Ecosystem Health and Recreation.



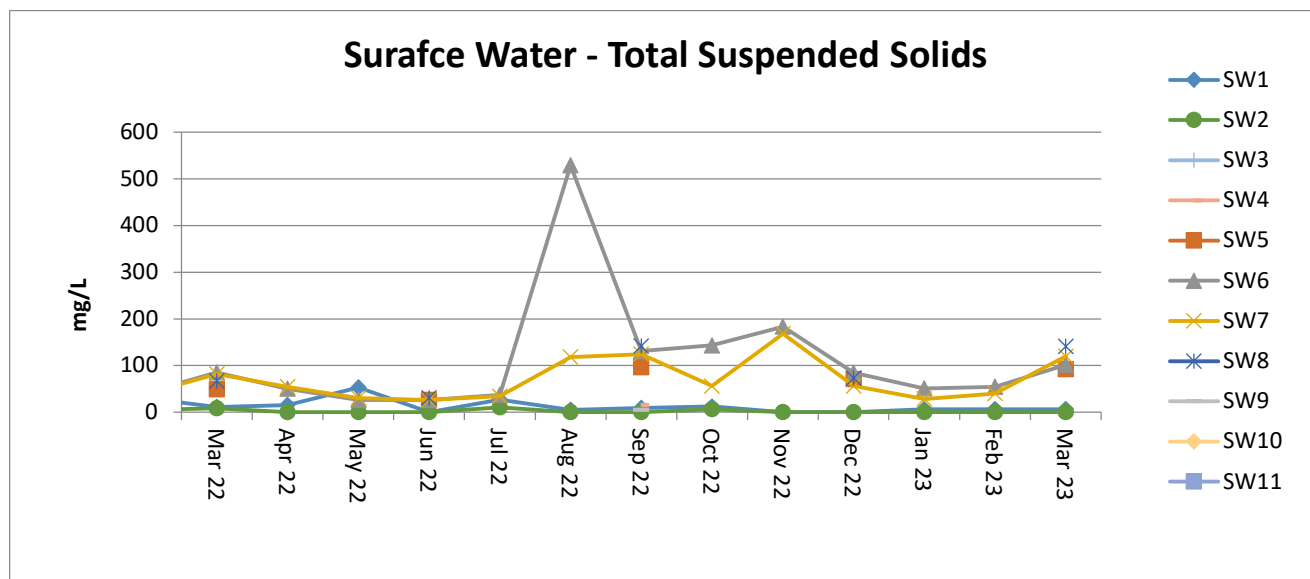
Electrical Conductivity

Surface water EC trends have remained consistent with SW5, SW6, SW7 and SW8 all historically variable. SW5, SW6, SW7 and SW8 are points along the Namoi River which are subject to regulated and variable flow regimes.



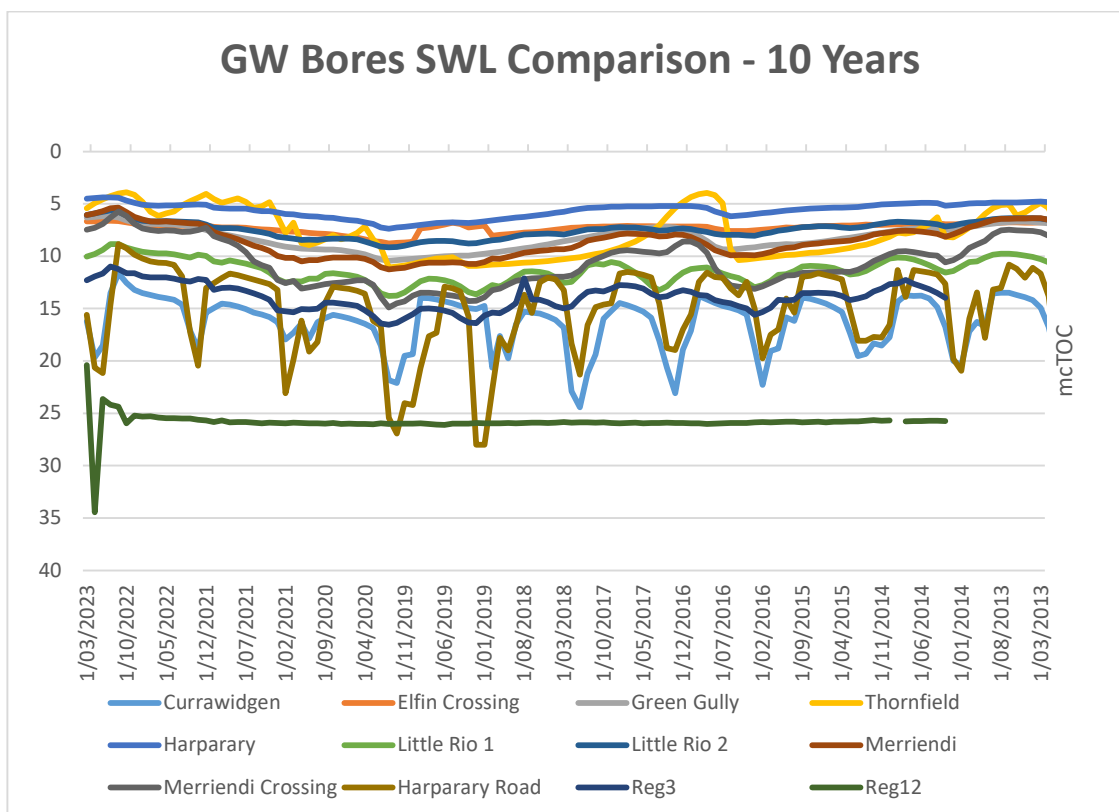
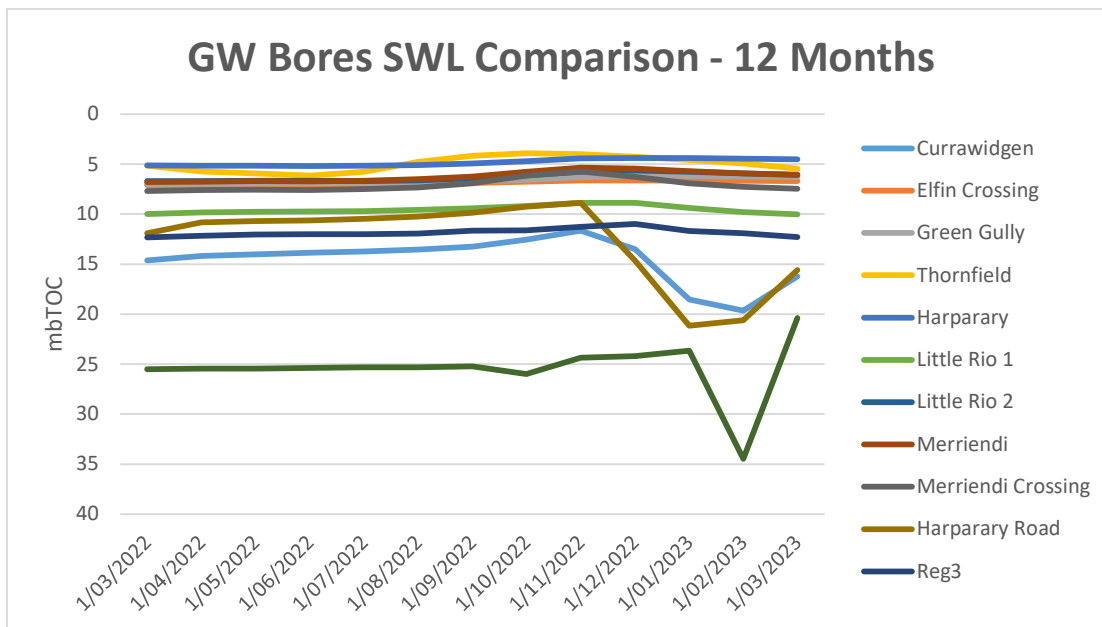
Total Suspended Solids (TSS)

Surface water TSS trends have remained generally consistent with historical results. SW5, SW6, SW7 and SW8 are historically variable as they are located along the Namoi River which is subject to regulated and variable flow regimes.



Regional Groundwater monitoring

Maules Creek Coal Mine monitors regional bores across the region.



Rehabilitation

Progressive rehabilitation works are ongoing. MCC is on track to complete 20ha of rehabilitation for CY23.

Feral Animal Management

Most recent routine Whitehaven Biodiversity Feral Animal Control program (January to March 2023) results were:

- 637 out of total 935 pigs trapped or baited were from the Maules Offset properties; and,
- 143 out of total 227 Canid Pest Ejectors (1080) consumed were from the Maules Offsets properties.

MCC conducted Feral Animal Control program during February – March 2023.

Weed Control

Spraying of summer dominant exotic grasses such as African Lovegrass, Rhodes Grass, Buffel Grass and Coolatai Grass; and Spraying of Broadleaf weeds such as Noogoora / Bathurst Burr, Thistles, St John's Wort has been completed. Targeted weed control for Prickly Pear, Sweet Rose Briar, Boxthorn and Fleabane is ongoing.

Community Complaints

No complaints were received during the quarter.